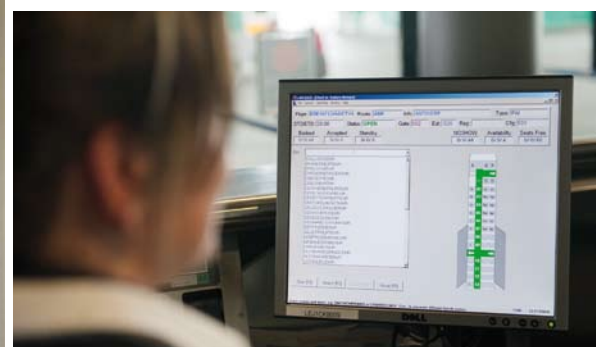
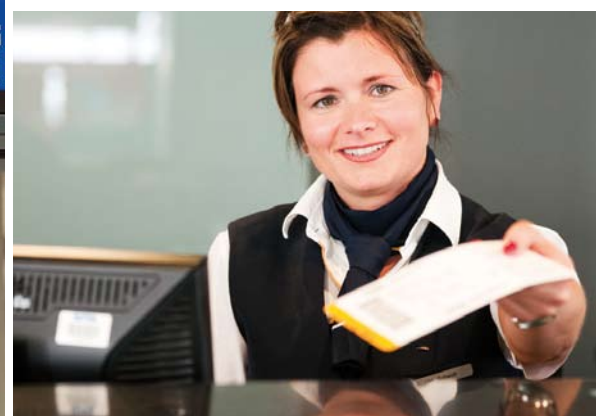




» *Handling at its best*

Flug/Departures				Abflug/Departures			
nach/über to/via	plan. sched.	Ausg. Gate	Bemerkungen Remarks	Flug Flight	nach/über to/via	plan. sched.	Ausg. Gate
71 Düsseldorf	12:25	01	departed	LH 1123 München		16:20	01
242 Sharm el S.	13:00	21	go to gate	BD 3165 München		16:20	01
121 München	13:20	01		ST 3598 Mallorca		16:30	26
171 München	13:20	01		LH 875 Düsseldorf		17:40	01
082 Antalya	14:15	22		AB 2910 Monastir		17:40	
02 Rhodos	14:15	26		XD 275 Antalya		18:35	
07 Frankfurt	14:40	25		4U 079 Köln/Bonn		18:35	25
082 Frankfurt	14:40	25		LH 1111 Frankfurt		18:40	01



» We make it possible

Airport Services Leipzig GmbH simply offers more! More quality, more flexibility and more service! Since our founding in 1990 we have made the professional handling of passenger and cargo flights our business. From check-in to flight closure, we cover the complete service spectrum.

We handle more than 12 000 flights per year. From low cost flights to premium carriers we're the competent and experienced specialists for all your cost efficient and responsible handling needs. Our 130 employees understand what really matters. With qualified engagement we make sure that all tasks are tailored exactly to your needs. Currently we serve around 25 internationally operating airlines.

The key to our success is our intensive staff training. We make sure that all passengers are absolutely satisfied. And in the end that is what counts! It's taken for granted that we fulfil – and at times exceed – all European guidelines. We set the standard for customer satisfaction very high and we're incredibly flexible in the utilization of technical systems.

We have the latest technology available and can adapt to the specific needs of individual airlines. Naturally, that applies to clothing as well! Whether a neutral uniform or a branded outfit is required; we're ready to meet the requests of our customers.

» Passenger Service

We represent your airline on site. With professional passion and careful attention to detail, we assure that from check-in to boarding we meet your expectations. We work with modern systems like CODECO, DAMAREL, axs-Control, PICTURES and Navitaire Minisoft and are prepared to operate your preferred check-in system. Simply ask!

Our service package is as diverse as your requests:

- Late-night check-in
- Care of children and assistance to passengers with special needs
- Group check-in
- Handling of General Aviation flights
- VIP service including limousine, hotel reservation etc.
- Company support and representation

» Flexibility tailored to your needs!

» Operations

We are always there for you! When others slow down, we really get going. Behind the scenes we support your crew in every step and in the last 20 years we've processed close to every type of aircraft there is. Our skilled employees know their way around and fulfil every requirement of the IATA, Live Animal Regulations as well as the directives of the JAR-OPS / EU-OPS.

For you we will take care of:

- Documentation for weight and balance data
- Weather and crew briefings
- Fuel planning
- Application and follow up of SLOTS
- Quality control
- Support in flight irregularities
- Walk-out assistance
- Delivery of all necessary loading and flight movement notifications (LDM, CPM, UCM, MVT etc.)
- Coordination of catering, cleaning etc.
- Crew hotel and transport information

Spot-on Service

- for airlines
- for airports
- for public transportation



FLD Flughafen- und Logistikdienste Mitteldeutschland GmbH
phone +49 (0) 341 224 16 90 mail info@fld-services.de
www.fld-services.de



Your preferred catering partner at the airport Leipzig-Halle

LSG Sky Chefs Deutschland GmbH
Phone: +49 341 224 1670, Fax: +49 341 224 1673
E-Mail: lejzfein@lsgskycheffs.com

» *Baggage Tracing*

We all know this scenario: after a flight, there is suddenly an item of baggage damaged or unaccounted for. No need to panic! At Airport Services Leipzig GmbH, we know what to do! Thanks to the search system WorldTracer we are able to clear up this kind of irregularity, investigate the whereabouts of the baggage item and resolve resulting problems for the passenger quickly, unbureaucratically and, if necessary, unconventionally.

» *Cargo Flights*

You're in equally safe hands with the handling and processing of cargo flights. From loading over cargo control to safety management we are your competent solution for all aircraft types, sizes and every kind of cargo.

» *Ticketing*

A series of tasks need to take place to ensure the efficient processing of flights. Ticketing is central to the process and we utilise the latest Computer Reservation System (CRS) Amadeus for this.

With us you take off properly

- Reservations
- Price calculation
- Ticket issuing
- Replacement of lost documentation
- Collecting excess baggage charge
- Processing flight irregularities

» *We adapt to your needs*

with tailor made solutions!



PORTGROUND

Aircraft Handling Services

MITTELDEUTSCHE AIRPORT HOLDING

Thorough, Safe and Fast

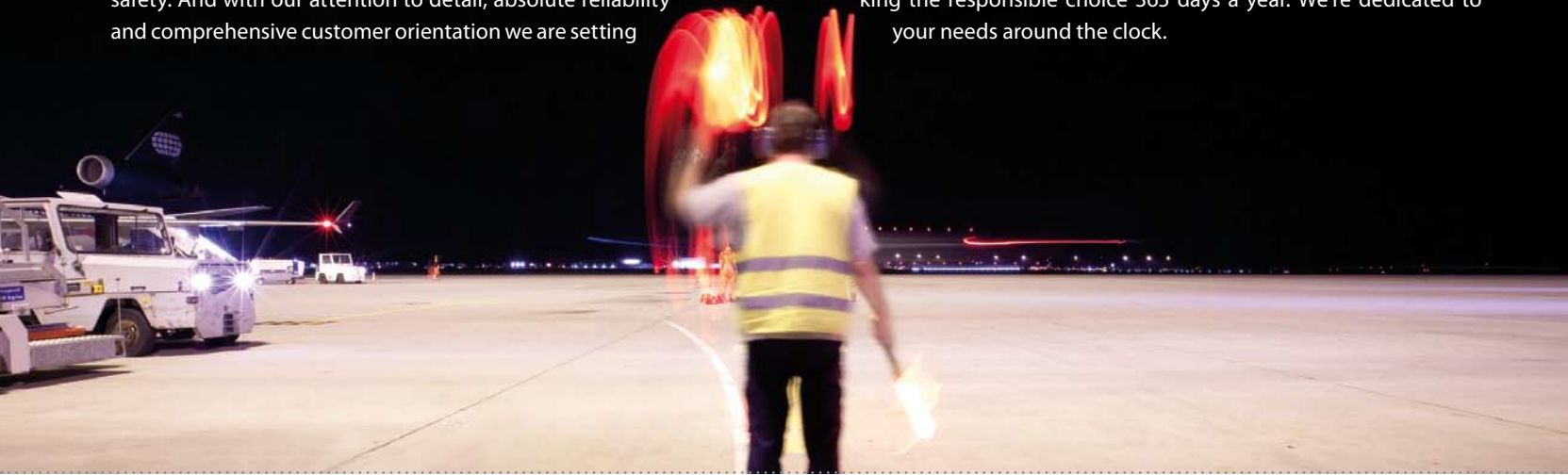
+++ Your Ground and Cargo Handling Service Partner +++

www.portground.com

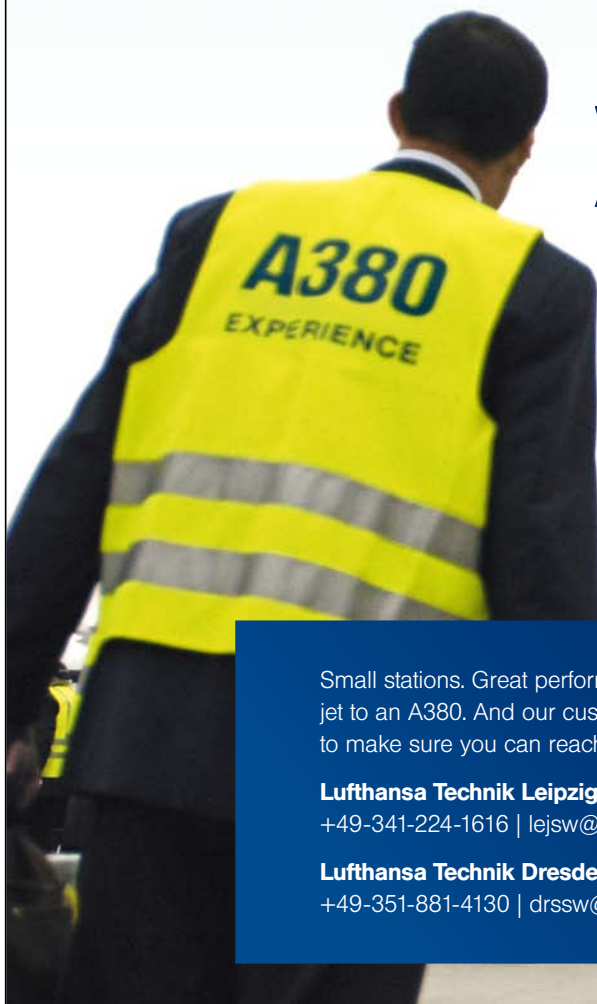
» Arrive safely at your destination!

Competition is huge in the flight industry. Only airlines that make the desires of their passengers their highest priority can succeed in business. We make no compromises when it comes to quality and safety. And with our attention to detail, absolute reliability and comprehensive customer orientation we are setting

new standards. We leave nothing to chance and take meticulous care in fulfilling all prescribed guidelines. It starts with flight editing and carries on long after the final walk-around. With us you're making the responsible choice 365 days a year. We're dedicated to your needs around the clock.



**We're ready.
Are you?**



Small stations. Great performance. Our line maintenance service covers any aircraft, from a regional jet to an A380. And our customer service desk in Leipzig and Dresden is staffed around the clock to make sure you can reach us whenever you need us. For more information:

Lufthansa Technik Leipzig

+49-341-224-1616 | lejsw@lht.dlh.de

Lufthansa Technik Dresden

+49-351-881-4130 | drssw@lht.dlh.de

More mobility for the world



Lufthansa Technik

» *Your partner in any situation*

With us you can be sure to expect more. Even in in-house training we are experienced specialist who can provide you with competent, thorough service. From check-in to ticketing who could support you better in all areas than us?

20 years of experience are a solid foundation and by now our experts are even being sought after abroad. Whether in Leipzig or South Africa, for a week or six months; we're there, where and when you need us.

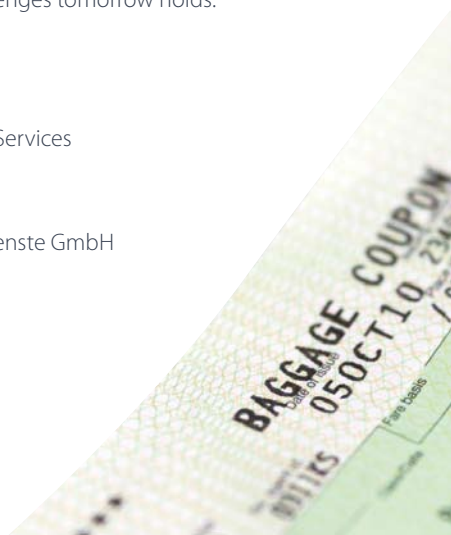
We support you competently, practically and on location!

- Passenger service
- Ramp supervision
- Load planning and documentation
- Baggage tracing/ baggage service
- IT supported training in the following systems: LH-CKI/Guide-CKI, PICTURES, DAMAREL, axs-Control, Navitaire Minisoft, CODECO, LH-WAB & WAB2GO as well as World Tracer

A company is only as strong as its partners. Be it cargo services, ramp services, line maintenance or catering, thanks to our longstanding partners we are equipped for the challenges tomorrow holds.

Our partners:

- Leipzig-Halle Airport
- PortGround Aircraft Handling Services
- Lufthansa Technik
- LSG Sky Chefs
- FLD Flughafen- und Logistikdienste GmbH
- Gate Gourmet



» *Airport Services Leipzig GmbH*

Terminalring 13
 D-04435 Flughafen Leipzig-Halle
 Fon: +49 (0)341-2241601
 Fax: +49 (0)341-2241620

E-mail: info@handling-lej.de
 Internet: www.handling-lej.de
 SITA: LEJKKLH



Ground Handling
 Council Member

